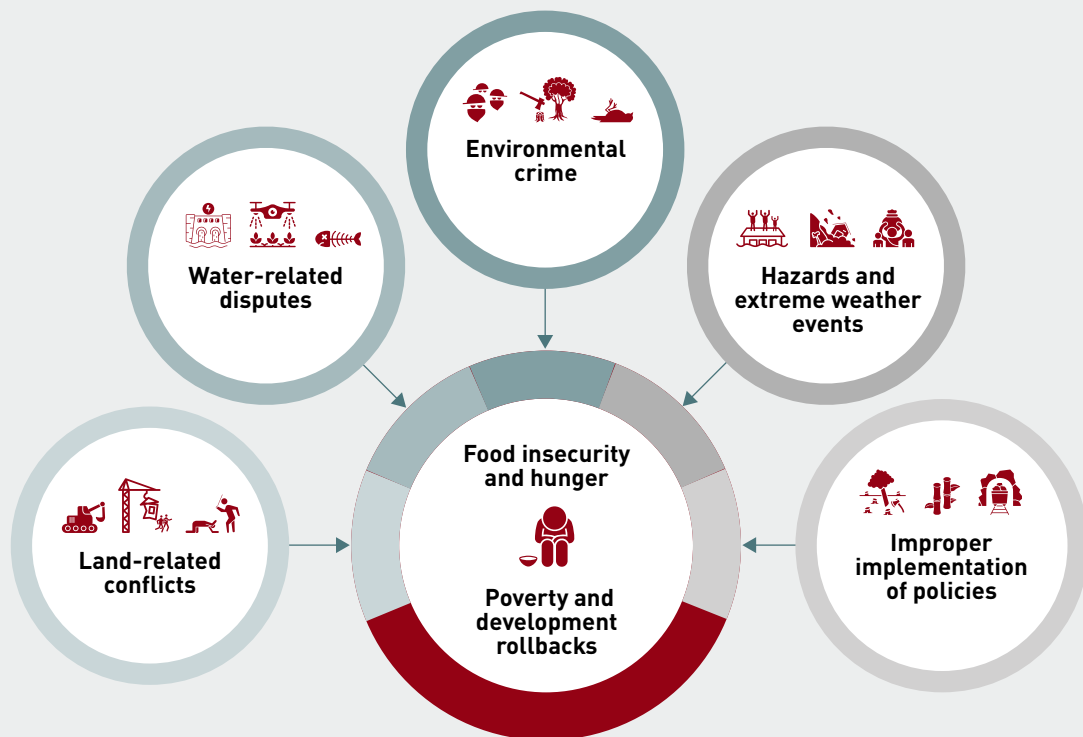


# Pathways of climate and environmental risks to human security in Brazil



## Land-related conflicts

Lands of traditional populations are grabbed by actors with economic interests, leading to violence, displacement, and marginalisation.

## Water-related disputes

Water sources needed for livelihood purposes are diverted for industrial and infrastructure projects, and the little water that remains is impacted by historic droughts.

## Environmental crime

Resources such as minerals, timber, and wildlife are sold for high profit in international markets, leaving a trail of violence, pollution, and environmental destruction.

## Hazards and extreme weather events

Hazards and extreme weather events cause displacement, property, and infrastructure damage and pose risks to safety and stability.

## Improper implementation of policies

Improper implementation reduces the benefit of climate and environmental policies by fostering land grabbing, displacement, and negative impacts on natural resources.