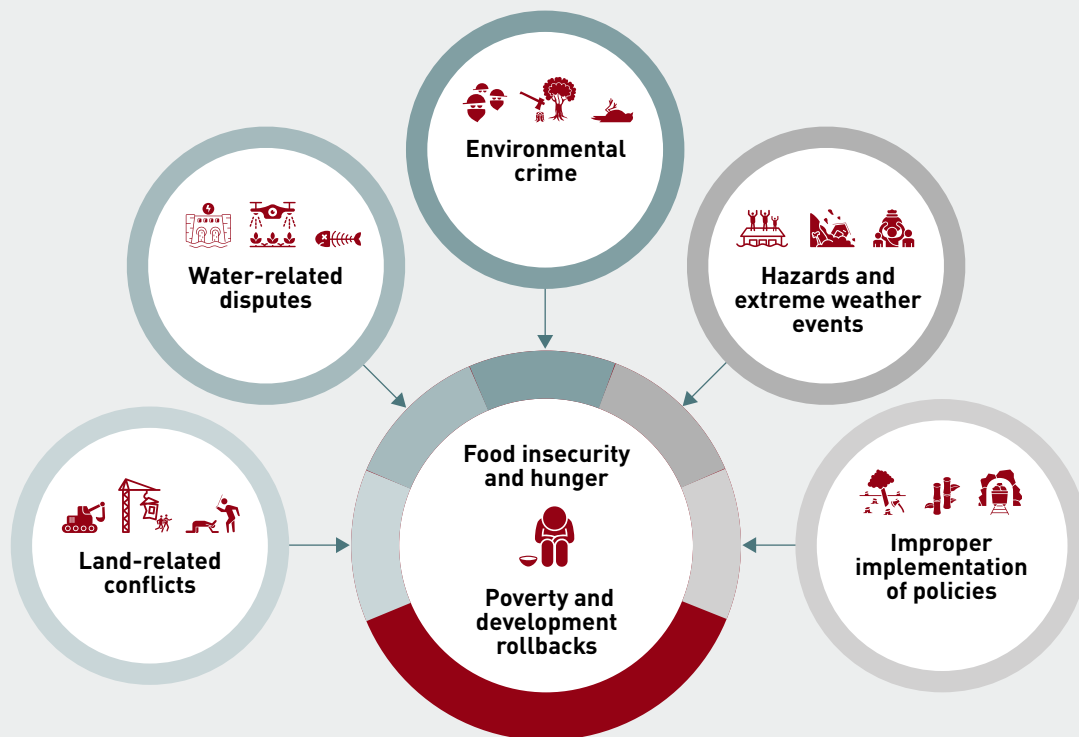


Pathways of climate and environmental risks to human security in Brazil



Land-related conflicts

Lands of traditional populations are grabbed by actors with economic interests, leading to violence, displacement, and marginalisation.

Water-related disputes

Water sources needed for livelihood purposes are diverted for industrial and infrastructure projects, and the little water that remains is impacted by historic droughts.

Environmental crime

Resources such as minerals, timber, and wildlife are sold for high profit in international markets, leaving a trail of violence, pollution, and environmental destruction.

Hazards and extreme weather events

Hazards and extreme weather events cause displacement, property, and infrastructure damage and pose risks to safety and stability.

Improper implementation of policies

Improper implementation reduces the benefit of climate and environmental policies by fostering land grabbing, displacement, and negative impacts on natural resources.